



Abbott

life. to the fullest.®



Abbott

A photograph of a man and a young boy running together outdoors. The boy is in the foreground, wearing a green and yellow striped shirt, and is laughing joyfully. The man is behind him, wearing a pink shirt, also smiling. The background shows a residential street with a fence and trees. The entire image has a blue color overlay.

life. to the fullest.®

Abbott is reimagining innovation for a better, healthier world

CREATING LIFE-CHANGING TECHNOLOGIES THAT
ARE BOTH **ACCESSIBLE AND AFFORDABLE**

HELPING MORE PEOPLE IN MORE PLACES
LIVE HEALTHIER AND BETTER LIVES

CREATING A HEALTHIER, **MORE SUSTAINABLE**
WORLD AND BUSINESS

Our goal is to help improve the lives of one in
every three people on this planet by 2030.



Shaping the future of health: putting more control of your health in your hands

DIGITIZE

Connect people with meaningful, timely, accurate and actionable information about their health

DEMOCRATIZE

Make health tech accessible, personal and convenient so more people in more places can benefit from it

DECENTRALIZE

Deliver care where and when it's needed beyond the hospital or clinic



Abbott at a glance

114,000

PEOPLE

135

YEARS IN BUSINESS

160+

COUNTRIES

\$40.1B

2023 SALES

TRUSTED PRODUCTS

FreeStyle Libre[®]

MitraClip[™]

Similac[®]

Alinity

Ensure

pediaSure[®]

Duphaston[®]
Hydrogesterone

BinaxNOW[™]

Pedialyte

Eterna[™]
SCS System

BurstDR[™]
Stimulation

Xience[™]

BRUFEN

AVEIR[™] VR
Leadless Pacemaker

Products may not be available in all markets.

Abbott is leading the way in human-powered health

CONNECTING PEOPLE AND THEIR DOCTORS WITH
ACCURATE, TIMELY INSIGHTS ABOUT THEIR HEALTH

NEUROSPHERE™ VIRTUAL CLINIC

Remote care of patients with chronic pain
and movement disorders



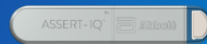
CARDIOMEMS™ HF SYSTEM

Remote heart failure monitoring system
proven to reduce hospital admissions



ASSERT IQ™ INSERTABLE CARDIAC MONITOR

Smartphone-enabled device to monitor
for abnormal heart rhythms



Abbott is leading the way in human-powered health

PROVIDING THE RIGHT TEST IN THE RIGHT PLACE AT THE RIGHT TIME

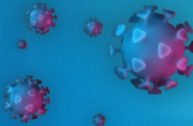
BinaxNOW™

Fast, accurate test results for COVID-19 in a convenient at-home testing kit



ABBOTT PANDEMIC DEFENSE COALITION

Hunting down viruses to help prevent future pandemics and provide testing



i-STAT® ALINITY® TBI RAPID TEST

Tests to help evaluate concussions quickly



ALINITY s® SYSTEM

Helping protect the blood and plasma supply



Abbott is leading the way in human-powered health

PERSONALIZING HEALTH AND NUTRITION BY UNDERSTANDING WHAT OUR BODIES ARE TELLING US

FREESTYLE LIBRE® PORTFOLIO

Continuous monitoring of glucose levels to drive improved health outcomes for people with diabetes



LINGO™

Lingo™ is designed to help consumers monitor and track glucose, ketones and lactate to make informed decisions about their health, nutrition and overall well-being.



STUDYING THE GUT MICROBIOME

Advancing nutrition solutions to support immunity, digestive health and brain development



We help people live fuller, healthier lives, maximizing their potential at all ages and stages of life

CONSUMER BIOWEARABLES

Lingo™ is designed to help consumers monitor and track glucose, ketones and lactate to make informed decisions about their health, nutrition and overall well-being



NEUROMODULATION CARE

Treating chronic pain and movement disorders by targeting specific areas of the brain and nervous system



CARDIOVASCULAR CARE

Helping people and their doctors better manage cardiac and peripheral vascular health using cutting-edge technologies



NUTRITION

Using the latest science to create better ways to nourish bodies from infancy to adulthood



DIABETES CARE

Giving people with diabetes the freedom to continuously monitor and track their glucose levels with unsurpassed 14-day accuracy and no painful routine fingersticks



MEDICINES

Helping people get and stay healthy with quality medicines they can trust



DIAGNOSTICS

Providing accurate, timely information to guide effective treatment decisions





Lasting values

PIONEERING

We see needs first and deliver game-changing solutions

ACHIEVING

We focus relentlessly on delivering for our stakeholders

CARING

We treat the people who depend on us as if they were our own family

ENDURING

We know that everything we do today should contribute to a stronger tomorrow

Leading in connected care with technology

CARDIOVASCULAR

- Electrophysiology
- Heart failure
- Cardiac rhythm management
- Structural heart
- Vascular care

DIABETES CARE

- Continuous glucose monitoring

NEUROMODULATION

- Brain therapies
- Chronic pain therapies

CONSUMER BIOWEARABLES

- Lingo™ is designed to help consumers monitor and track glucose, ketones and lactate to make informed decisions about their health, nutrition and overall well-being



Electrophysiology

Portfolio includes:

ENSITE™ X EP SYSTEM

State-of-the-art cardiac mapping system provides 3D models of the heart and its electrical activity



ADVISOR™ HD GRID MAPPING CATHETER, SENSOR ENABLED™

First-of-its-kind electrode configuration to create more highly detailed maps of the heart



TACTIFLEX™ ABLATION CATHETER, SENSOR ENABLED™

Next-generation device that is designed for intuitive, safe and effective treatment of heart rhythm disorders

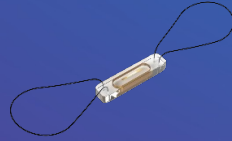


Heart failure

Therapies across the heart-failure disease spectrum:

CARDIOMEMS™ HF SYSTEM

Pulmonary artery pressure monitoring can provide early detection of worsening heart failure



HEARTMATE 3™ LEFT VENTRICULAR ASSIST DEVICE (LVAD)

Heart pump for patients in advanced stage heart failure is the first to use Full MagLev™ Flow Technology



CENTRIMAG™ CIRCULATORY SUPPORT SYSTEM

Machine that temporarily takes over the function of the heart and lungs so they can rest and heal



Cardiac rhythm management

Portfolio includes:

INSERTABLE CARDIAC MONITORS

Bluetooth®-compatible devices that help doctors catch hard-to-detect arrhythmias



CARDIAC RESYNCHRONIZATION DEVICES

Help the heart pump in a more coordinated way



IMPLANTABLE CARDIAC DEFIBRILLATORS

MRI-safe devices that help slow abnormally fast-beating hearts



PACEMAKERS

MRI-safe devices that restore normal heart rhythm



Bluetooth and Bluetooth logo are registered trademarks of Bluetooth SIG, Inc.

Structural heart

Broadest portfolio of heart-valve repair, replacement technologies and occlusion devices.

TRANSCATHETER-VALVE REPAIR AND REPLACEMENT DEVICES

- **MitraClip™ and TriClip™**
Repair for leaking mitral and tricuspid valves
- **Tendyne™**
Novel mitral-valve implantation system
- **Navitor™**
Valve replacement system to treat aortic stenosis



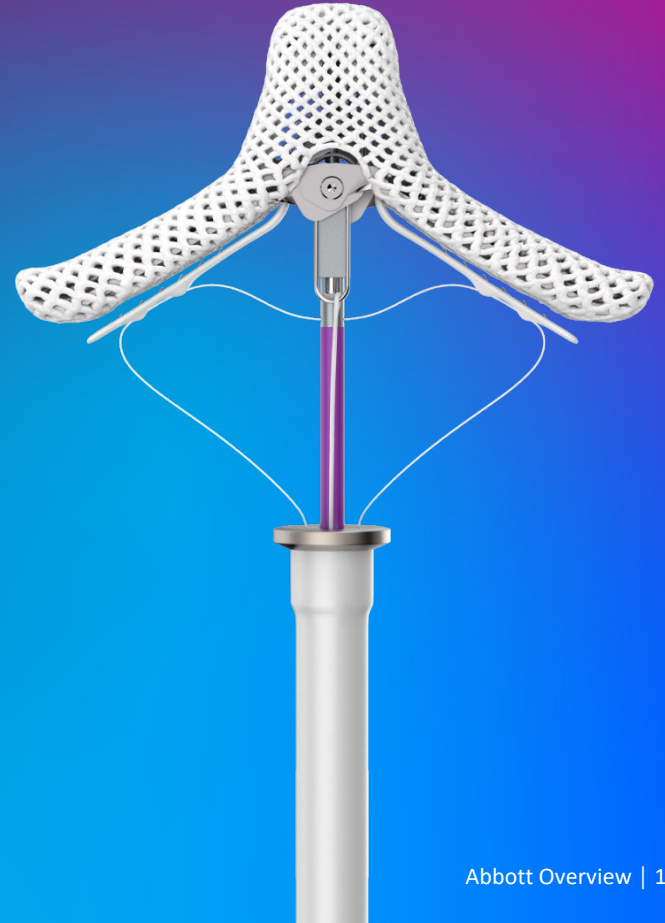
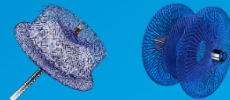
SURGICAL MECHANICAL AND TISSUE HEART VALVES

- **Epic™ Plus**
Mitral and aortic stented tissue valves
- **Regent™ and Masters**
Mitral and aortic mechanical heart valves

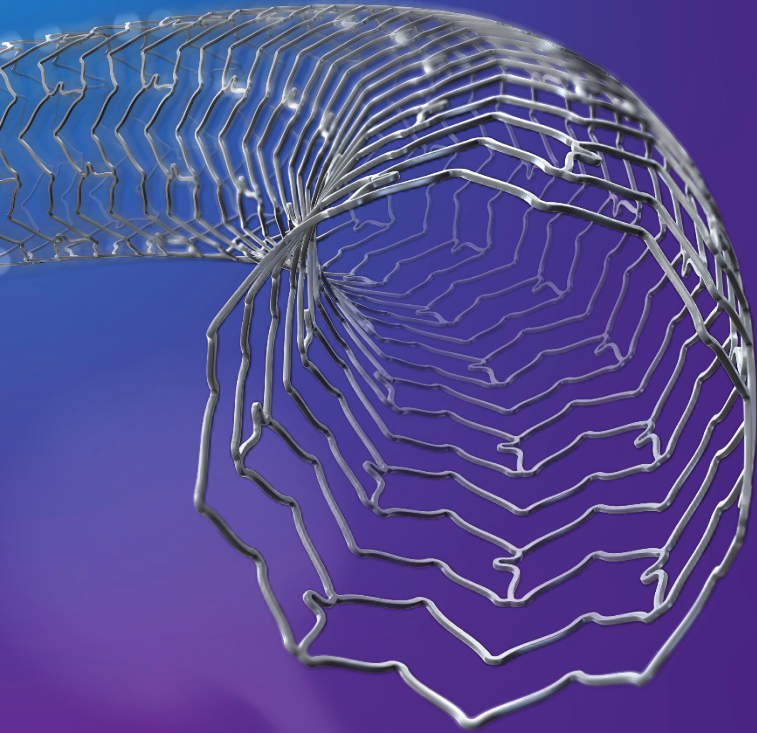


STROKE MITIGATION AND CONGENITAL HEART DISEASE DEVICES

- **Amplatzer™ PFO and Amulet™ Occluders**
Reduce the risk of stroke
- **Amplatzer Piccolo™ Occluder**
Designed to fix a congenital heart defect in premature babies



Vascular care



Minimally invasive products designed to optimize the treatment of coronary and peripheral vascular disease.

XIENCE™ FAMILY OF STENTS

Market-leading DES stent systems designed to treat complex cases



ULTREON™ 1.0 SOFTWARE

AI-driven imaging diagnostic solution to give better insights to optimize patient outcomes



JETI™ PERIPHERAL THROMBECTOMY SYSTEM

Unique aspiration system designed to break up and remove clots while reducing the risk of dislodged thrombus



DIAMONDBACK 360 SYSTEM

An innovative new approach to treating peripheral artery disease



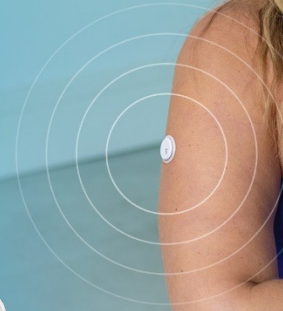
Continuous glucose monitoring

Providing accurate results faster and with greater convenience, so people can continuously monitor their glucose levels with minimal pain or disruption.

#1 worldwide, with 4.5 million users¹

FREESTYLE LIBRE® PORTFOLIO

- Discreet, easy to use and eliminates painful routine fingersticks²
- Delivers unsurpassed 14-day accuracy³ and real-time glucose readings every minute
- Provides actionable insights for improved outcomes⁴⁻⁶
- Affordable and accessible⁷ to millions of people worldwide
- Allows monitoring glucose levels using a smartphone. Patient can share data automatically with the caregiver and healthcare provider via our secure, cloud-based platform
- Actionable insights and proven health outcomes
- Optional real-time glucose alarms
- Designed to communicate and connect with other devices
- Smallest, thinnest, most discreet CGM sensor (size of two stacked U.S. pennies)
- FreeStyle Libre® 3 is a more environmentally sustainable system designed with 70% reduction in volume





NEUROMODULATION DEVICES

Chronic-pain and movement-disorder therapies

A global leader in chronic-pain solutions.

UNIQUE PAIN-MANAGEMENT PORTFOLIO INCLUDES:

- Radiofrequency ablation
- BurstDR™ spinal cord stimulation
- Dorsal root ganglion stimulation



INFINITY™ DEEP BRAIN STIMULATION (DBS) SYSTEM

Targeted patient-specific treatment to help address the symptoms of Parkinson's disease and essential tremor



NEUROSPHERE™ VIRTUAL CLINIC

Remote care of patients with chronic pain and movement disorders



MEDICINES

High-quality, trusted products to get and stay healthy

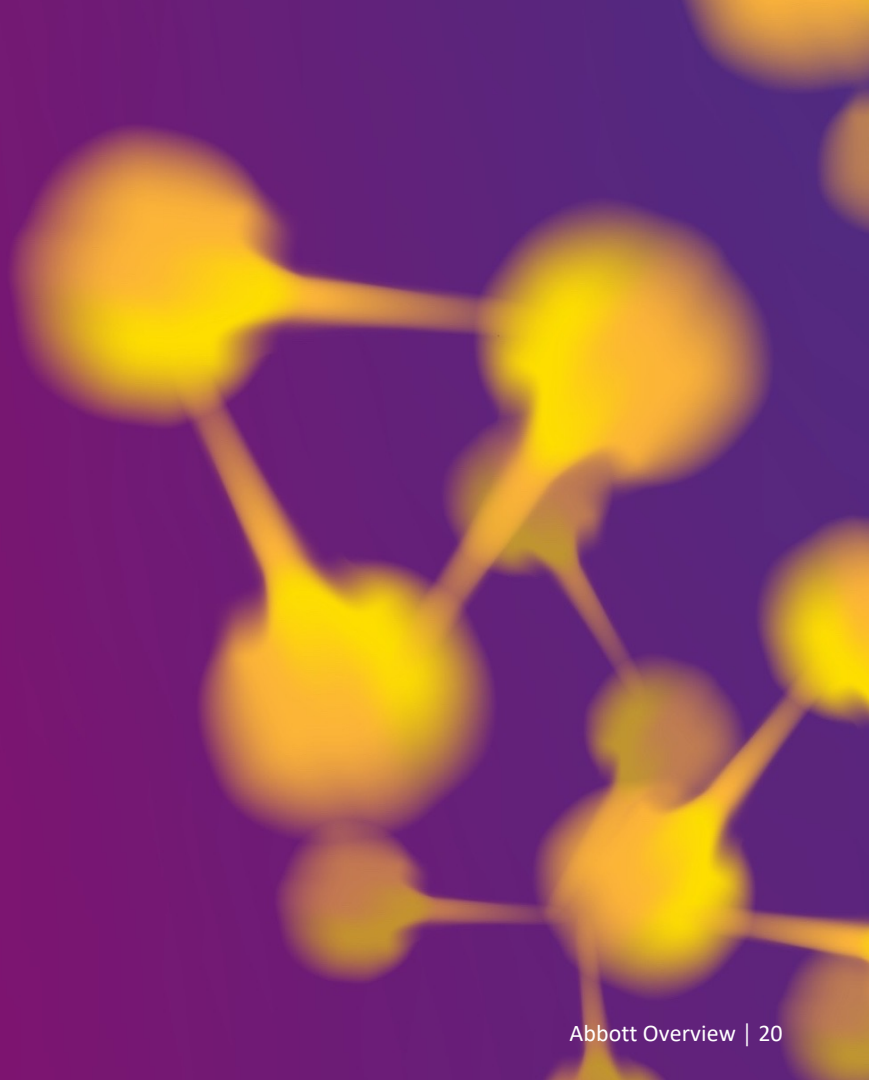
GASTROENTEROLOGY

WOMEN'S HEALTH

CARDIOMETABOLIC

PAIN MANAGEMENT/CENTRAL
NERVOUS SYSTEM

RESPIRATORY



Millions of people around the world use our products every day

DIFFERENTIATED OFFERING

- High-quality standards
- Reliable supply chain
- Superior clinical science
- Patient-centered innovation



REGION-SPECIFIC PRODUCT PORTFOLIOS

- In low- and middle-income countries



DIAGNOSTICS

Transforming care by providing timely information to better manage health

ADVANCED INSTRUMENT SYSTEMS

for hospitals, reference labs and blood banks

LAB-BASED TESTS

for health screening, disease diagnosis and monitoring

MOLECULAR DIAGNOSTICS

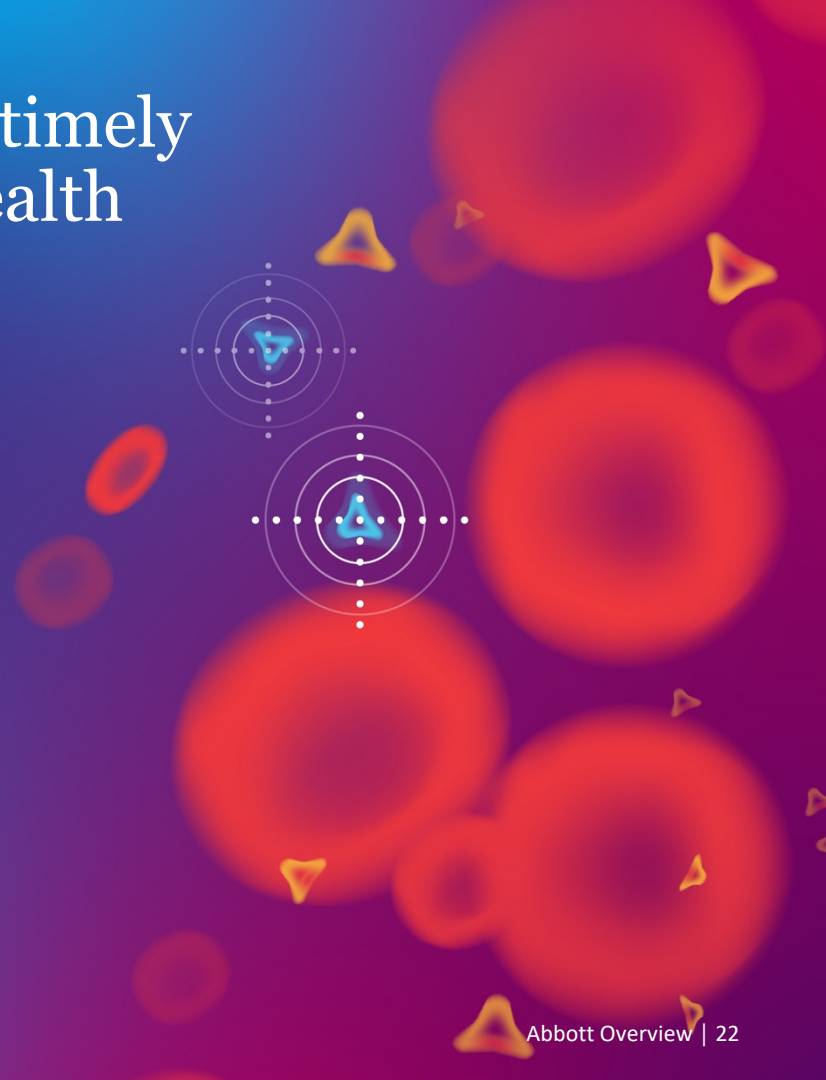
for managing infectious diseases and serious illnesses

POINT-OF-CARE TESTING

for lab-quality results in minutes

SOPHISTICATED INFORMATION SOLUTIONS

that uncover insights to improve productivity and patient outcomes



DIAGNOSTICS

Core laboratory and molecular

Multi-platform line of next-generation instruments and informatics, offering significant benefits for health systems:

INCREASED EFFICIENCY

IMPROVED WORKFLOW

BETTER HEALTHCARE PERFORMANCE

0.01

0.02



Rapid and point-of-care testing

A world leader in point-of-care testing.

PATIENT-SIDE TESTING

Designed to improve the overall quality of care and help our customers provide better clinical and economic healthcare outcomes



RAPID MOLECULAR TESTING

Gives doctors the insight they need — in just minutes — to deliver the right care at the right time with molecular precision



LATERAL FLOW TESTING

Provides results in minutes, even in remote areas with portable and affordable tests



DIGITAL SOLUTIONS

Innovative apps that manage test results and help track diseases as they move through populations



NUTRITION

Science-based products for every stage of life

PEDIATRIC

ADULT

MEDICAL

REHYDRATION



NUTRITION

Pediatric

#1 brand fed in hospitals (U.S)*

SIMILAC®

Our line of infant and toddler formulas designed to support healthy growth and development



PEDIASURE®

Designed to support children's growth with high-quality protein and essential vitamins and minerals



PEDIALYTE®

Oral electrolyte solution specially formulated to help prevent mild to moderate dehydration in children and adults



*Similac is the #1 brand fed in U.S. hospitals; data on file.

Proprietary and confidential — do not distribute





NUTRITION

Adult

#1 worldwide

ENSURE®

A line of complete, balanced and targeted nutrition products that can help people stay active and at their best



SPECIALIZED NUTRITION

- Glucerna® (diabetes)
- Juven® (supports wound healing)
- Nepro® (kidney disease requiring dialysis)
- Tube-feeding products



ZONEPERFECT®

Nutrition beyond protein to fuel busy adult lifestyles



Peace of mind

Creating quality health products as if they're for our own families, with integrity in everything we do



A sustainable future starts with health

IT'S THE FOUNDATION FOR EVERYTHING.

It helps people thrive, makes communities strong and fuels healthy societies.

At Abbott, sustainability means managing our company to deliver long-term impact for the people we serve – shaping the future of healthcare and helping the greatest number of people live better and healthier.



Life-changing work at a company that enables employees to grow and learn, care for themselves and family, and live their fullest lives

We offer development and advancement opportunities that allow every employee to achieve their full potential

Employees can participate in physical, emotional and financial well-being programs that help them take care of themselves and their families

Our diverse and inclusive global community allows us to work together to help people live healthier lives



Meaningful rewards to help Abbott people lead their fullest lives

Competitive compensation and benefits programs

Wellness and fitness initiatives

Award-winning internship programs

Freedom 2 Save

Freedom To Work





Making a meaningful difference

Fortune's “Most Admired Companies” since 1984

Dow Jones Sustainability Index since 2005;
industry sector leader for 10 years

Ranked #12 among Newsweek’s “America’s Most Responsible Companies” in 2023

DiversityInc “Top 50 Companies for Diversity”

Recognized as a workplace leader around the world

“Top 20 Employer,” *Science* magazine

Award-winning innovation across our company

References for slide 18

1. Data on file. Abbott.
2. Fingersticks are required if your glucose alarms and readings do not match symptoms or when you see Check Blood Glucose symbol during the first 12 hours. Fingersticks are required for treatment decisions when you see Check Blood Glucose symbol, when symptoms do not match system readings, when you suspect readings may be inaccurate, or when you experience symptoms that may be due to high or low blood glucose.
3. Data on file. Abbott Diabetes Care.
4. The *LibreLinkUp* app is only compatible with certain mobile device and operating systems. Please check www.librelinkup.com for more information about device compatibility before using the app. Use of the *LibreLinkUp* app requires registration with LibreView, a service provided by Abbott and Newyu, Inc.
5. Miller, Brandner et al. HbA1c Reduction After Initiation of the *FreeStyle Libre* System in Type 2 Diabetes Patients on Long-Acting Insulin or Non-Insulin Therapy.
6. Acute diabetes complications defined by hypoglycemia, hypoglycemic coma, hyperglycemia, ketoacidosis, or hyperosmolarity ICD-10 codes as primary diagnosis for inpatient or as any position in the outpatient emergency claim; Matthew Kerr, Gregory Roberts, Diana Souto, Yelena Nabutovsky.
7. Based on a comparison of list prices of the *FreeStyle Libre* 14 day system versus competitors' CGM systems. *FreeStyle Libre 2* and *FreeStyle Libre 3* system will be list priced the same rate as *FreeStyle Libre* 14 day system. The actual cost to patients may or may not be lower than other CGM systems, depending on the amount covered by insurance, if any.



life. to the fullest.®

Abbott